



# GAT MONTHLY MEMBERSHIP PROGRESS REPORT

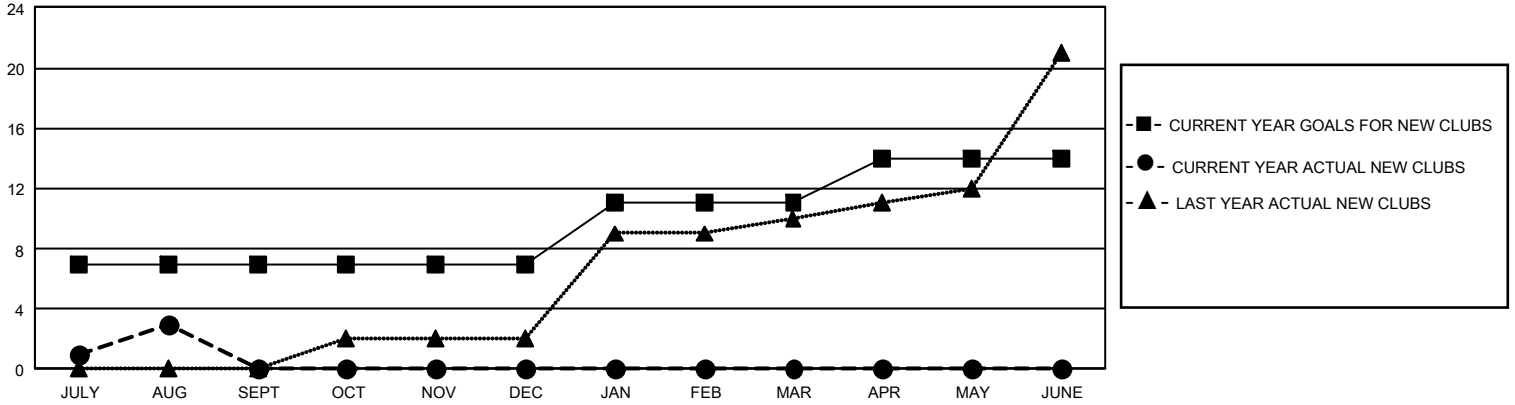
Results as of: 8/31/2024

## GMT Constitutional Area 5 - C, Group B

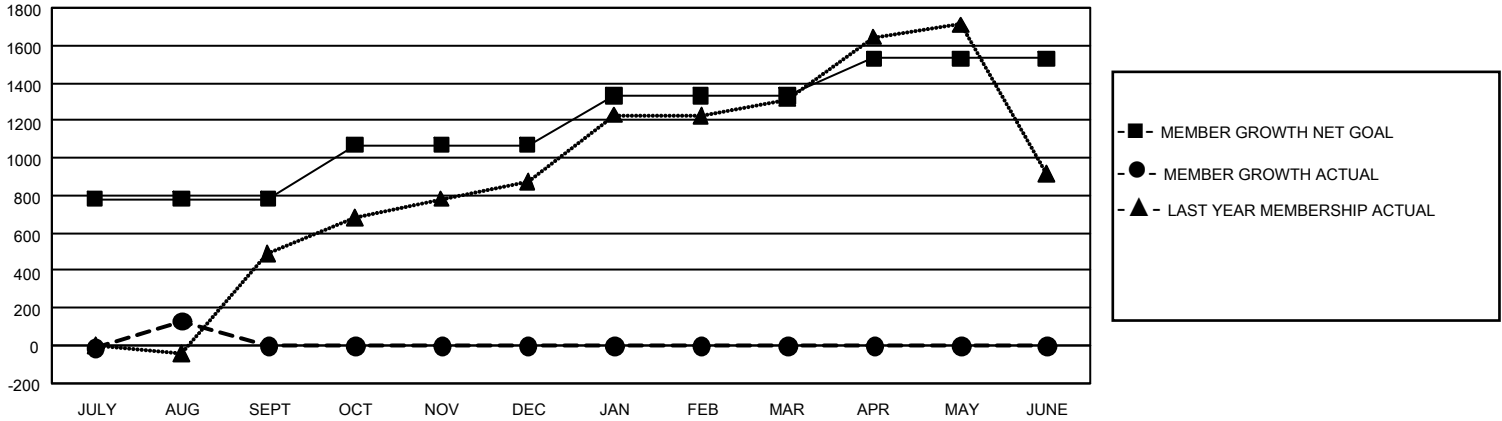
REPORT DOES NOT INCLUDE CLUBS IN UNDISTRICTED AREAS.

Clubs				Members			
RESULTS FOR 2024-2025				RESULTS FOR 2024-2025			
QUARTER	NEW CLUB GOAL	NEW CLUBS	DROPPED CLUBS	QUARTER	MEMBER GROWTH NET GOAL	MEMBER GROWTH ACTUAL	DROPPED MEMBERS ACTUAL (including transfers)
JULY/AUG/SEPT	21	3	0	JULY/AUG/SEPT	780	245	61
OCT/NOV/DEC	0	0	0	OCT/NOV/DEC	290	0	0
JAN/FEB/MAR	12	0	0	JAN/FEB/MAR	260	0	0
APR/MAY/JUNE	9	0	0	APR/MAY/JUNE	200	0	0

GOALS AND ACTUAL NEW CLUBS CUMULATIVE



GOALS AND ACTUAL MEMBERS CUMULATIVE



DROPPED CLUBS: 0	51 CLUBS OF 423 ADDED 1 OR MORE NEW MEMBERS	<u>GENDER DISTRIBUTION</u>	
<u>DROPPED MEMBERS</u>		MALE	5,711 (55.34%)
DECEASED	0	FEMALE	4,608 (44.66%)
CLUB CANCELLED	0	NON BINARY	0 (0.00%)
OTHER	61	PREFER NOT TO ANSWER	0 (0.00%)
<b>TOTAL</b>	<b>61</b>	TOTAL FAMILY UNIT MEMBERS	988
	<a href="#">CLICK HERE FOR CUMULATIVE MEMBERSHIP DATA</a>	FAMILY MEMBERS PAYING HALF DUES	510